

SPARKELEC Touch Series Switches/GPO iOS/Android Configuration

THIS FITTING MUST BE INSTALLED BY A QUALIFIED ELECTRICAL CONTRACTOR IN ACCORDANCE WITH THE LATEST AS/NZS 3000 AND RELEVANT AMENDMENTS

Touch Zigbee Wi-Fi Switches - Technical Specifications

Supply Voltage: 240v AC 50Hz

Switch Max. load: 600w Incandescent or 100W LED per gang, ta: 0+35°C

GPO MAX LOAD: 10A 240b AC 50hz

Security: Mac Encryption; WEP/WAPI/TKIP/AES

Wi-Fi Standard: IEEE802.11b/g/n

System Requirements: iOS 8.0 or higher, Android 4.1 or higher



Important Safety Issues

- Ensure the power is disconnected before installing.
- This product is NOT suitable for damp or explosive environments.
- Modification of this product will void any warranty.
- Indoor use only.
- Do not cover with insulation.



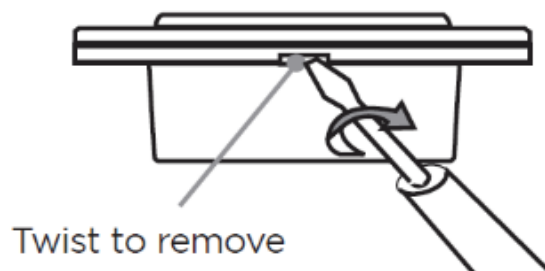
Product Features –

- Three wire design (neutral required) & Class II Construction.
- Timer function on every switch
- Controllable switches and monitoring power consumption via app
- Remotely control switches and power points

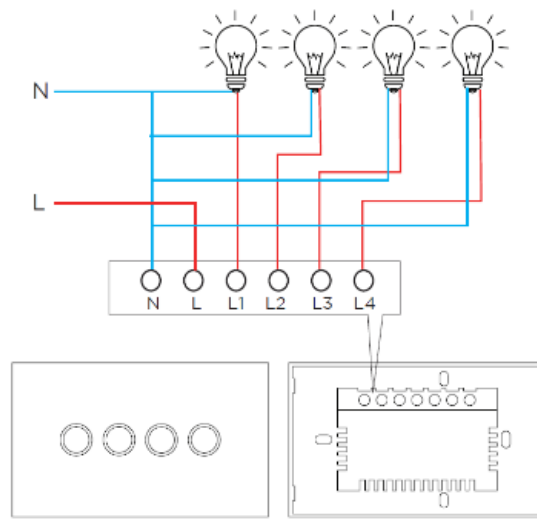
Installation:

The smart glass wall switches are designed to fit standard wall switch cut outs, and plaster/stud brackets with 84mm centres.

Remove the front glass by inserting a flat blade screwdriver into the recessed slot on the side of the switch, twist and remove.

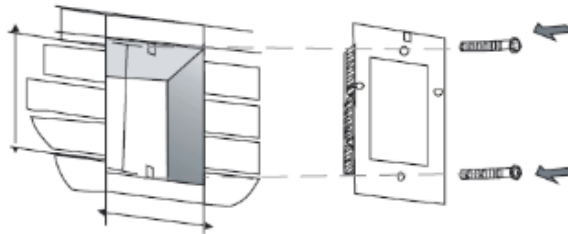


Step 1: Connect the active incoming supply to L , N and earth using the 20mm² terminals (shown in below wiring diagram)



Step 2: Insert the smart glass wall switch onto the wall, aligning the 84mm mounting holes with the plaster/stud bracket holes.

Tighten the mounting screws and attach the cover by clipping on one side after the other.



Zigbee Gateway Connection and Configuration (for SPT-GATEWAY)

Please ensure your mobile phone is connected to your local 2.4GHz Wi-Fi network - your mobile phone and your smart device needs to be within good signal strength range of your Wi-Fi Router

Connect the Zigbee Gateway to Home network:

Step 1: Connect the Micro USB AC Adapter to a power outlet.

Step 2: Plug in the RJ45 Cat5e/Cat6/Cat6A patch lead (behind the device) to your existing router, network switch or RJ45 Wall socket outlet that is connected your home/office network (must have internet access).

Then Power ON the DEVICE

***Configuring the Zigbee Gateway**

Step 1: Download the SPARKELEC ‘Smart Life’ app from the Apple app store or Android Google play store (If your Android device does not have access to Google play store you can request a copy of the .apk file by emailing us)

Step 2: Register the SPARKELEC ‘Smart Life’ APP

Step 3: Open the SPARKELEC Smart Life App..

- For new users - register a new account **OR**
- If existing user- login with your username and password

***Setting up your Zigbee Gateway via the ‘Smart Life’ app-** Once an account has been registered & logged in.

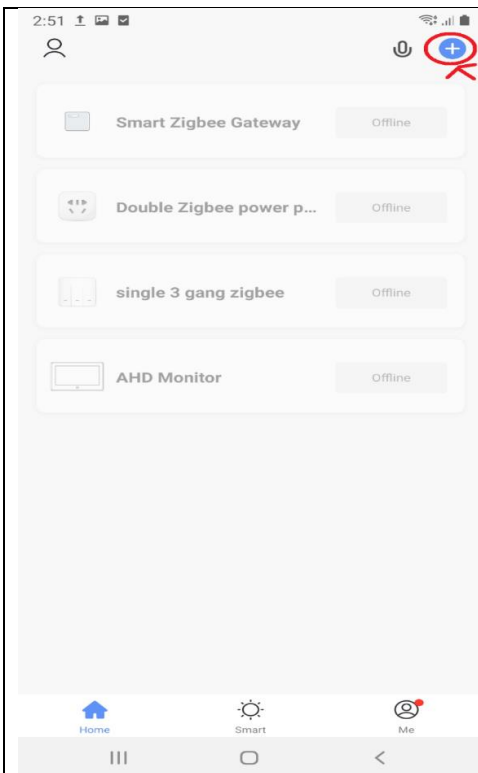


Figure 1:

You can now setup multiple devices at multiple locations

Step 1 – Tap on the Blue “+” Button

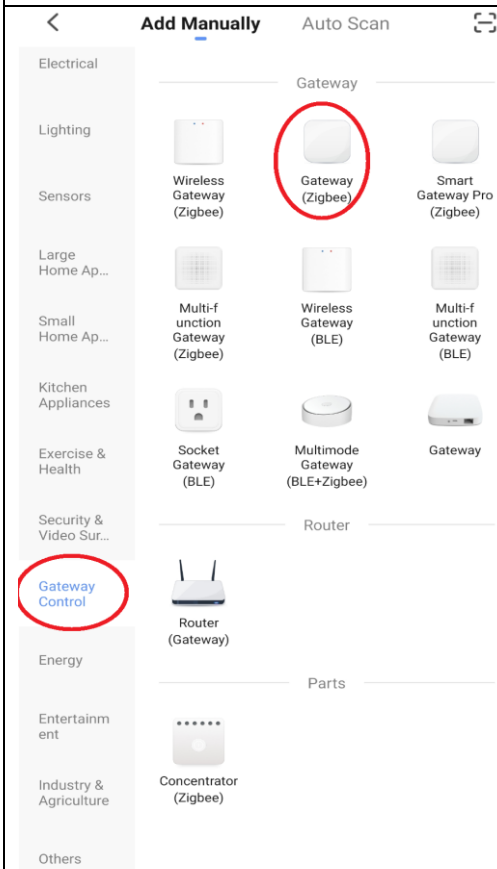


Figure 2:

Step 2 – Selection “Auto Scan” or “Add Manually”

Step 3 – Select “Gateway Control” From the menu on the left and then select “Gateway (Zigbee)”

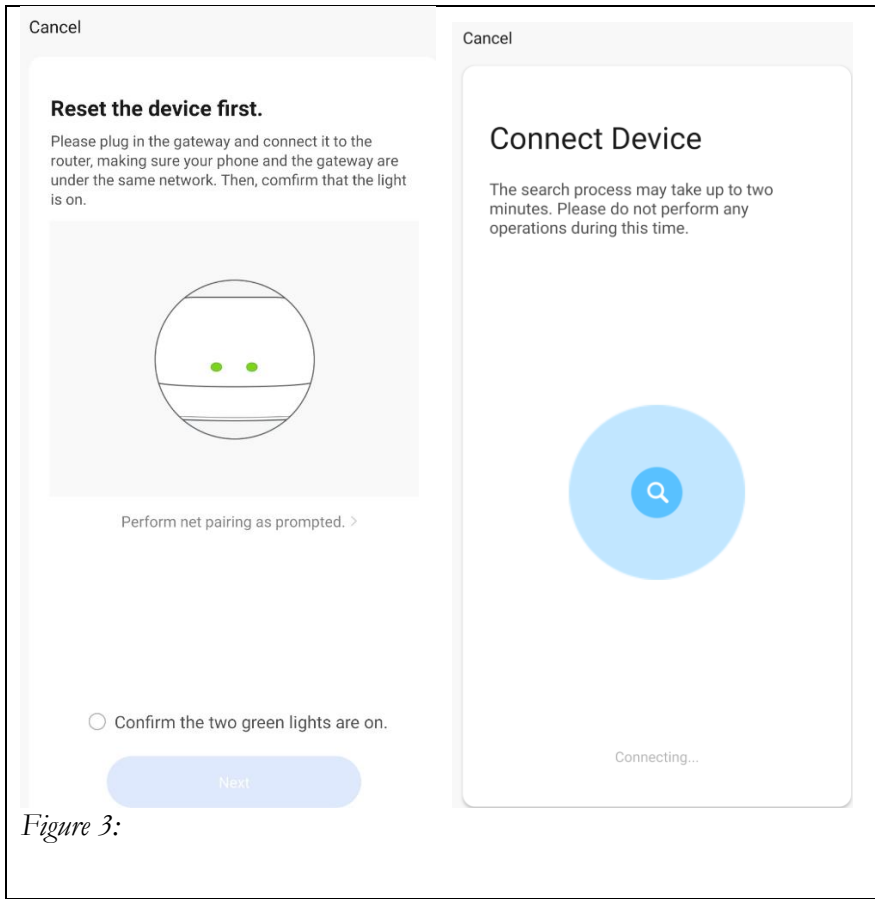


Figure 3:

Step 4 – Reset the Gateway by holding on the reset button (Located Next to the Micro-USB and RJ45 Socket – behind the gateway) for 5 secs and green lights will start flashing

Step 5 – Select “confirm the two green lights are on”

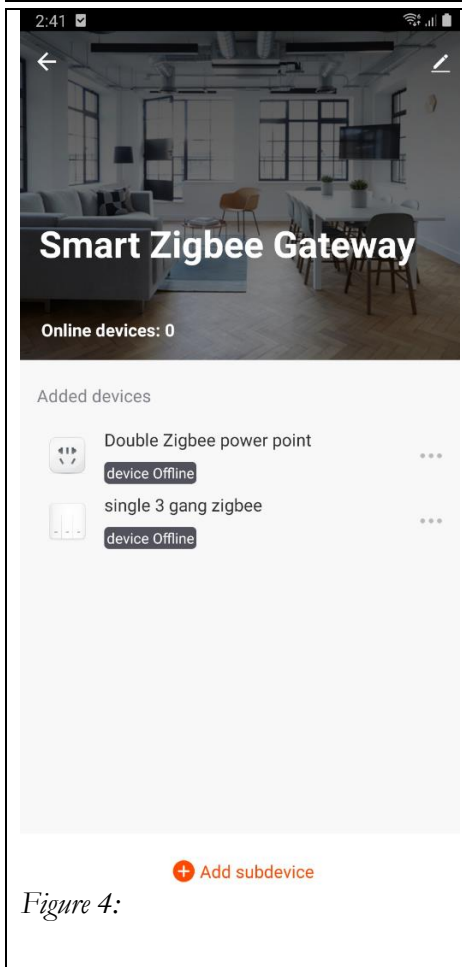


Figure 4:

Step 6 – Now the Smart Zigbee Gateway Should be configured and you now can control via Wi-Fi/3G/4G/5G.

** You can also add devices by selecting “+Add Sub device” on the bottom of Smart Zigbee Gateway menu “located at bottom of picture (Figure 4)

Repeat above steps 1-4 to add devices such as Zigbee Wi-Fi Smart switches, power points, dimmers or curtain switches